

ESD-5

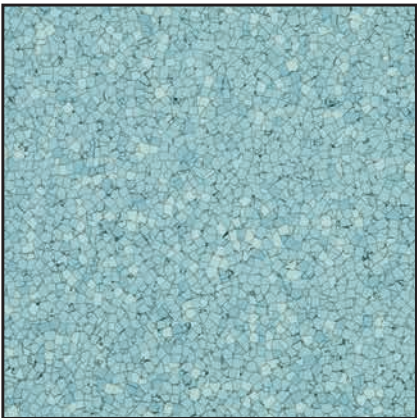
ESD-5

ESD-5 is a static-conductive, flexible homogeneous vinyl floor covering with an electrical resistance of $10^4 < R_t < 10^9$ available in tiles. The conductive carbon coated PVC pellets create the permanent static conductive properties.

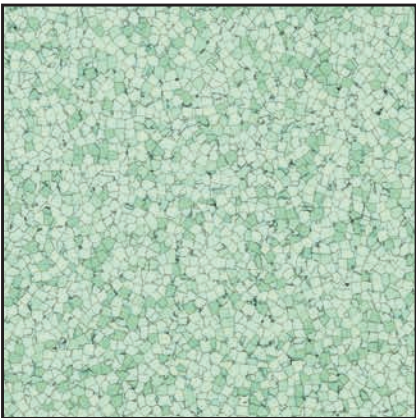
Place Recommended

Healthcare, Hospital, Clinic, Office Administration, Education, Industry, or wherever ESD has to be eliminated

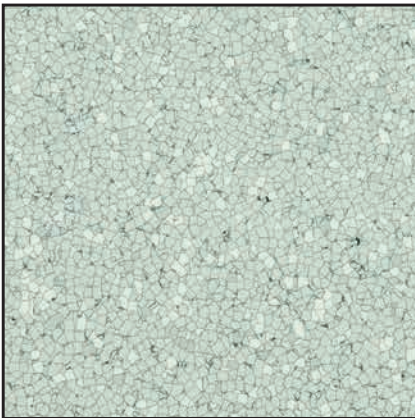
4779



4780



4701



4200



Size
608 X 608 mm.



Thickness
2.0 mm. / 3.0 mm.*



Type
Tile (Square)



Treatment
NO

* MADE TO ORDER
Estimate Timing : 4 weeks

Shades and colors may vary
slightly from actual tiles, please
request actual sample from
Marketing and Sales Department

ESD-5 is a static-conductive, flexible homogeneous vinyl floor covering with an electrical resistance of $10^4 < R_t < 10^6$ available in tiles. The conductive carbon coated PVC pellets create the permanent static conductive properties.



COMPLETE YOUR PART

All functions and design need to be complete with the special important part. The ESD series are the answer of the safety-wise.

Installing

1. Preparing Subfloor



Hard, level, dry, smooth, sound and clean

2. Laying Method



2.1 Unpack tiles 24hrs. before laying



2.2 Trace a line perpendicular to the main entrance



2.3 Ensure equal cuts for tiles on both sides



2.4 Leaving a walkway around the perimeter of the room



2.5 Apply normal primer



2.6 Apply conductive adhesive to central area



2.7 Lay out the copper strips and connect to the ground



2.8 Lay the tiles



2.9 Roll with 50kg roller



2.10 Heat weld the joints 24 hrs after installation

Maintenance



Remove loose debris



Low speed cleaning machine



Do not apply wax or apply only wax with equivalent electrical properties



Daily Maintenance

Dry sweeping or remove dirt with a damp mop



Periodic Maintenance



High speed cleaning machine

For full specification, installation, and maintenance details, please refer to the handbook

ESD-7

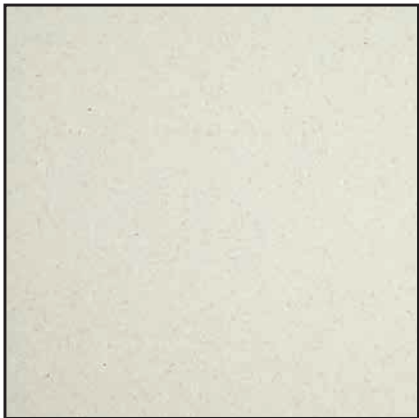
ESD-7

ESD-7 is a dissipative flooring, antistatic (< 2 kv), flexible homogeneous floor coverings available in tile form. Calendered and compacted with permanent anti-static properties. It acts as a continuous dissipater $10^7 < Rt < 10^9$.

Place Recommended

Healthcare, Hospital, Clinic, Office Administration, Education, Industry, or wherever ESD has to be dissipated.

1483



1470



1485



1417



Size
608 X 608 mm.



Thickness
2.0 mm.



Type
Tile (Square)



Treatment
NO

Shades and colors may vary slightly from actual tiles, please request actual sample from Marketing and Sales Department

ESD-7 is a dissipative flooring, antistatic ($< 2 \text{ kv}$), flexible homogeneous floor coverings available in tile form. Calendered and compacted with permanent anti-static properties. It acts as a continuous dissipater $10^7 < R_t < 10^9$.



COMPLETE YOUR PART

All functions and design need to be complete with the special important part. The ESD series are the answer of the safety-wise.

Installing

1. Preparing Subfloor



Hard, level, dry, smooth, sound and clean

2. Laying Method



2.1 Unpack tiles 24hrs. before laying



2.2 Trace a line perpendicular to the main entrance



2.3 Ensure equal cuts for tiles on both sides



2.4 Apply adhesive to a few sq.m of subfloor in one quarter



2.5 Lay the tiles



2.6 Roll with 50kg roller



2.7 Heat weld the joints 24 hrs after installation

Maintenance

Initial Cleaning



Remove loose debris



Low speed cleaning machine

Protection



Do not apply wax or apply only wax with equivalent electrical properties

Daily Maintenance



Dry sweeping or remove dirt with a damp mop



High speed cleaning machine

For full specification, installation, and maintenance details, please refer to the handbook